

Photovoltaic Module Monocrystalline96

KEY FEATURES



High module efficiency through superior manufacturing technology



No power loss thanks to improved temperature co-efficient caused by 5 busbar solar cell



Strictly control the micro-crack of solar cells and the other non visible defect of internal modules



Module can bear snow loads up to 5400Pa and wind loads up to 2400Pa



Manufactured according to and certified international I Quality and Environment Management System



Using advanced low reflection and high light transmission glass and cell sheet surface cutting technology, in the weak light environment can also play a good performance.



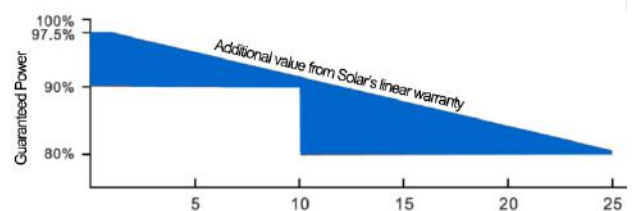
Certificates

- IEC61215, IEC61730, CQC, CE, TUV
- ISO9001:2008
- ISO14001:2004
- BSOHSAS18001:2007



Warranties

- 10 years product warranty
- 25 years power warranty



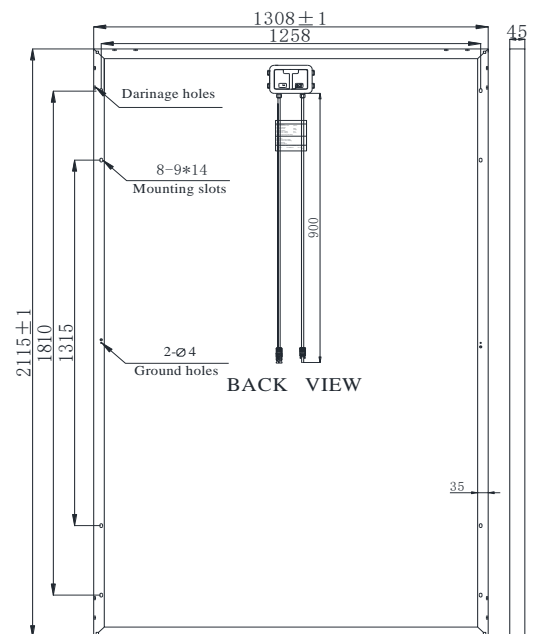
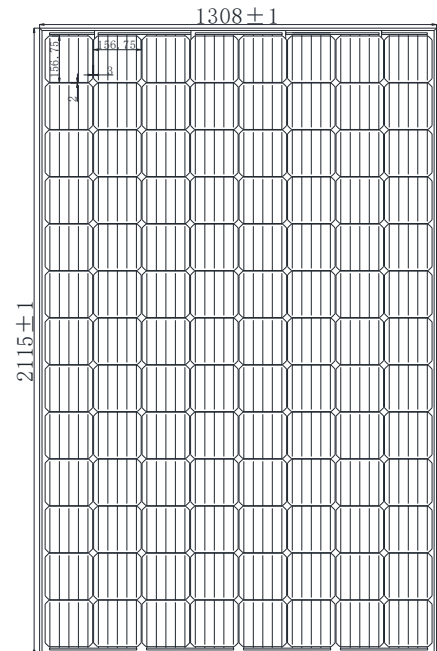
Electrical Characteristics

Model	JY-490S6-36	JY-495S6-36	JY-500S6-36	JY-505S6-36	JY-510S6-36
Maximum Power at STC(Pmax)	490W	495W	500W	505W	510W
Optimum Operating Voltage (Vmp)	54.08V	54.12V	54.16V	54.18V	54.19V
Optimum Operating Current (Imp)	9.07A	9.15A	9.24A	9.33A	9.42A
Open-Circuit Voltage (Voc)	66.45V	66.46V	66.49V </td <td>66.52V</td> <td>66.56V</td>	66.52V	66.56V
NSort-Circuit Current (Isc)	9.58A	9.67A	9.77A	9.86A	9.95A
Solar Cell Efficiency (%)	19.86	20.07	20.27	20.47	20.67
Solar Module Efficiency (%)	17.71	17.89	18.07	18.25	18.44
Operating Temperature	-40to85°C				
Maximum System Voltage	DC1000				
Maximum Series Fuse Rating	15A				
Power Tolerance	0~+3%				
STC:Irradiance 1000W/m ² ,Modules Temperature 25°C,AM=1.5					

Temperature Coefficient and Mechanical Characteristics

Nominal Operating Cell Temperature (NOCT)	47°C+/-2°C
Temperature Coefficient of Pmax	-0.47%/°C
Temperature Coefficient of VOC	-0.346%/°C
Temperature Coefficient of ISC	+0.036%/°C
Solar cell	Mono156.75*156.75mm
No.of cells	104 (8*13)
Dimensions	2115mm*1308mm*45mm
Weight	35kg
Front glass	3.2mm tempered glass
Frame	Anodized aluminium alloy
Junction box	PV--*****
Connector	Plug and socket
Output cables	PV 4.0mm ² ,0.9m
1*20'	/
1*40'	/
1*40'HQ	/

Engineering Drawings



IV-Curves

Current-Voltage&Power-Voltage Curve

