

This is a watermark for the trial version, register to get the full one!

Company information

Benefits for registered users:

- 1.No watermark on the output documents.
- 2.Can operate scanned PDF files via OCR.
- 3.No page quantity limitations for converted PDF files.

Remove Watermark Now



COMPANY INTRODUCTION

Hangzhou Jiayuan is a manufacturing and trading Company located in Hangzhou city China. We specialize in the manufacturing of Copper wire, CCA Wire, Enameled Aluminum and Enameled Copper wire. We supply our products in the domestic market as well as abroad.

Besides our in house manufactured products we also supply Power cables, Robot cables, Elevator cables and electric

This is a watermark for the trial version, register to get the full one!

Benefits for registered users:

- 1.No watermark on the output documents.
- 2.Can operate scanned PDF files via OCR.
- 3.No page quantity limitations for converted PDF files.

Remove Watermark Now

Our moto is to not only supply high quality products but also provide options and better solutions as per requirements of our clients. To ensure long term cooperation and business relation.

Website:www.jayuan.cn

Alibaba Store:hzjytc.en.alibaba.com

Tel:0571-63814088

Email:Marketing@jayuan.cn

Add:E3A06 No. 68 Huaqiao Road. Jincheng Town, Lin'an
Hangzhou,Zhejiang,China

Electric Wire

BV



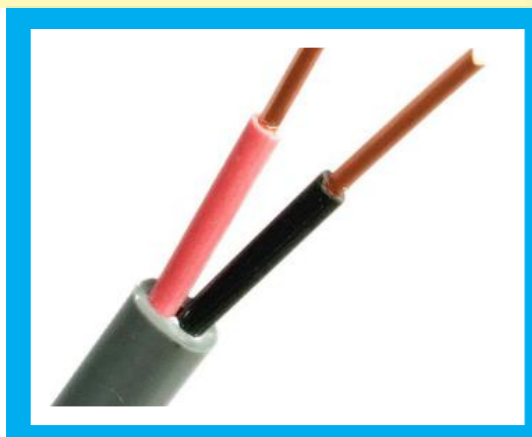
Item: BV/BLV
 Standard: BS6004/ IEC60227
 Voltage: 450/750 V
 Conductor: Cu/ CCA/ AL
 Material: PVC
 Section: 0.5 mm²—240 mm²
 Application: Building wire for placing into trucking and conduit

This is a watermark for the trial version, register to get the full one!

Benefits for registered users:

- 1.No watermark on the output documents.
- 2.Can operate scanned PDF files via OCR.
- 3.No page quantity limitations for converted PDF files.

BVVB

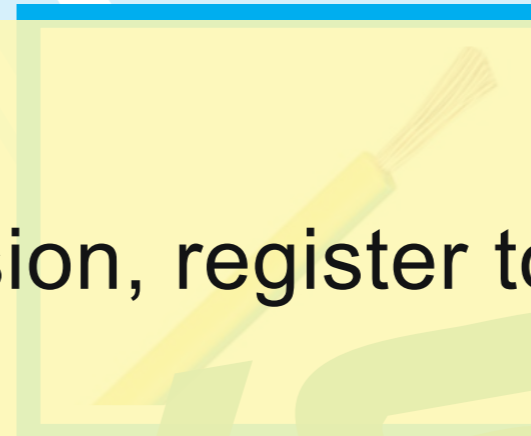


Flat Cable

Item: BVVB
 Standard: BS6004/ IEC60227
 Voltage: 300/500 V
 Conductor: Cu/ CCC/ CCA
 Material:PVC/PVC
 Section: 2*0.75 mm²—3*16 mm²
 Application: Suitable for indoor or outdoor surface wiring

Nominal corss section (mm ²)	Diameter of conductor (mm)	Insulation thickness (mm)	Sheath thickness (mm)	Max.outer Diameter (mm)	Ref.weight (kg/km)	Conductor resistance at 20 C ≤(Ω/km)
2*0.75~3*6	2*1/0.97 ~3*7/1.04	0.6~1.8	0.9~1.1	4.6*7.1 ~7.8*18.2	44.59~ 296.52	24.5~3.08

RV

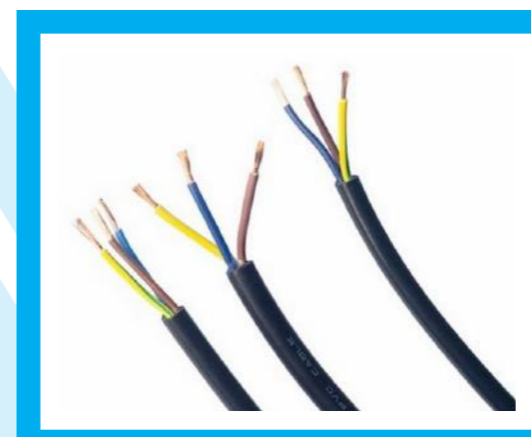


Item: RV
 Standard: BS6004/ IEC60227
 Voltage: 450/750 V
 Conductor: Cu/ CCA
 Material: PVC
 Section: 0.5 mm²—240 mm²
 Application: Building wire for placing into trucking and conduit

Remove Watermark Now

0.5~240	16/0.2~ 1225/0.5	0.6~1.8	2.6~29.5	8~2420	39~0.0801
---------	---------------------	---------	----------	--------	-----------

RVV



Flexible Single Wire

Item: RVV
 Standard: BS6500/ IEC60227/VDE0281
 Voltage: 300/500 V
 Conductor: Cu/ CCC/ CCA
 Material: PVC/PVC
 Section: 2*0.5 mm²—5*6 mm²
 Application: Suitable for indoor or outdoor surface wiring

Nominal cross section (mm ²)	Diameter of conductor (mm)	Insulation thickness (mm)	Sheath thickness (mm)	Max. outer Diameter (mm)	Ref. weight (kg/km)	Conductor resistance at 20 C ≤(Ω/km)
2*0.75~5*4	2*24/0.2~5*56/0.3	0.6~0.8	0.8~1.3	6.5~14.2	52~380	26~4.95

YJV



Item: YJV/YJLV
 Standard: BS6346/ IEC60502
 Voltage: 0.6/1 KV
 Conductor: Cu/ ALUMINUM
 Material: XLPE/ PVC
 Section: 1*10 mm²—4*240+120 mm²
 Application: Used in electric transmission and distribution system

Power Cable (YJV/YJLV)

High Voltage Cable

This is a watermark for the trial version, register to get the full one!

Benefits for registered users:

- 1.No watermark on the output documents.
- 2.Can operate scanned PDF files via OCR.
- 3.No page quantity limitations for converted PDF files.

Nominal cross section (mm ²)	Insulation thickness (mm)	Sheath thickness (mm)	Overall Diameter (mm)	Cu. weight (kg/km)	Al. weight (kg/km)
1*10~5*240; 3*50+1*25~ 4*240+1*120	0.7~1.7	1.5~3	8~68.2	153~11367	95~4763

Remove Watermark Now



XLPE Armored Power Cable (Steel Tape Armored)

Conductor: Cu/ ALUMINUM
 Material: XLPE/ STA/ PVC
 Section: 2*10 mm²—4*240+120 mm²
 Application: Using in electric transmission and distribution system

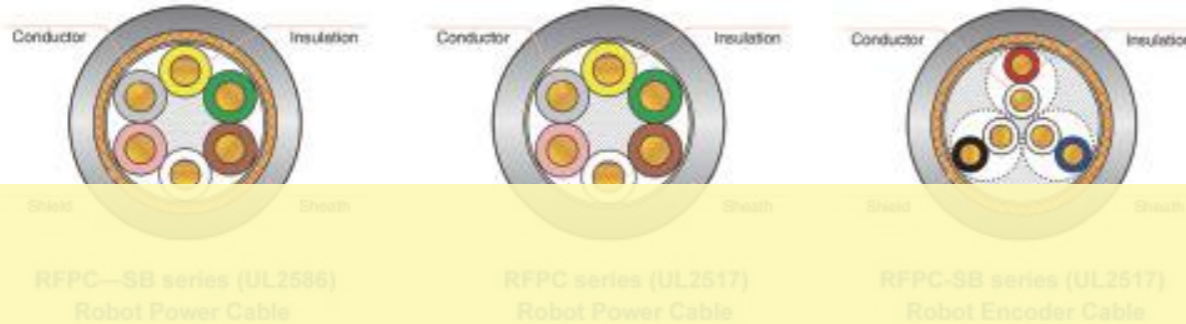
Nominal cross section (mm ²)	Approx Diameter (mm)	Ref. weight (kg/km)	Current carrying(A)
3*2.5+3*0.5~ 3*240+3*35	12.5~69	232~10221	26~416

Nominal cross section (mm ²)	Insulation thickness (mm)	Steel Tape thickness (mm)	Sheath thickness (mm)	Overall Diameter (mm)	Cu. weight (kg/km)	Al. weight (kg/km)
2*10~5*240; 3*50+1*25~ 4*240+1*120	0.7~1.7	2*0.3~2*0.5	1.8~3.5	19.3~74	673~13232	544~6428

Robot Cable

RFPC-SB series(UL2586)/RFPC series (UL257)/RFPC-SB series (UL2517)

Construction



Elevator Cable

TVVPG-TV 10M/S

Hight speed elevator cable

Construction 10m/s TVVBPG-TV round cable with screen,video,fiber optic and cable network cable mult-function elevator cable

This is a watermark for the trial version, register to get the full one!

Benefits for registered users:

- 1.No watermark on the output documents.
- 2.Can operate scanned PDF files via OCR.
- 3.No page quantity limitations for converted PDF files.

Remove Watermark Now

Conductor	Tinned annealed copper
Rated voltage:	300V
Insulation:	ETFE
Voltage withstand test:	AC2.0kV/min
Shield:	Tinsel
Sheath:	Flame-retardant Heat-resistance PVC
Insulation resistance:	100MΩ.km(20℃)

Certificate	RoHS,CE	Standard	GB/T 5023.6, IEC60227-6
Conductor	Copper	Sheath	PVC for elevator cable
Insulation	PVC	Rated Voltage	300/500V
Shield	Copper or Tinned copper	Voltage withstand test	2000V/5min

*Nate:Above are the standard products also we can on customer requirement.

*Note:We could manufacture the control core,coaclal,fiber optic and networkcable, and the number of units design acording to customer requirements

Elevator Cable

ETT,ETP 4M/S TVVBP 4M/S

Low speed elevator cable
4m/s TVVBP-TV flat lift cables assembly of stranding cores with shielded pairs

Characteristics
Customized with connector assembly

- Bending Resistance
- Running speed: ≤4m/s
- Travelling height: ≤80m
- Loop diameter: ≤700mm
- Operating temperature: -15°C~+70°C
- 3million bending test
- Certificate:RoHS,CE,CCC

Construction

This is a watermark for the trial version, register to get the full one!

Benefits for registered users:

- 1.No watermark on the output documents.
- 2.Can operate scanned PDF files via OCR.
- 3.No page quantity limitations for converted PDF files.

Conductor	Copper	Sheath	PVC for elevator cable
Insulation	PVC	Rated Voltage	300/500V
Shield	Copper or Tinned copper	Voltage withstand test	2000V/5min

*Note:Note:Cables recommender for installstlons where the suspended length exceed 60m,we could add steel rope

Elevator Cable

TVVBP-TV 10M/S

Hight speed elevator cable

● **Construction** 10m/s TVVBPG-TV High flat lift cables assembly cores with shielded pairs

Power cable Steel wire Coaxial cable Shielded pairs

TVVBPG-TV 300/500V 30×0.75+2P×2×0.75mm²

Characteristics
Customized with connector assembly

- Bending Resistance
- Running speed: ≤10m/s
- Travelling height: ≤300m
- Operating temperature: -15°C~+70°C
- 3million bending test
- Certificate:RoHS,CE
- SYV75-75Q
- Standard: JB/T 8734.6, EN50214

Remove Watermark Now

Conductor	Copper	Sheath	PVC for elevator cable
Insulation	PVC	Rated Voltage	300/500V
Shield	Copper or Tinned copper	Voltage withstand test	2000V/5min

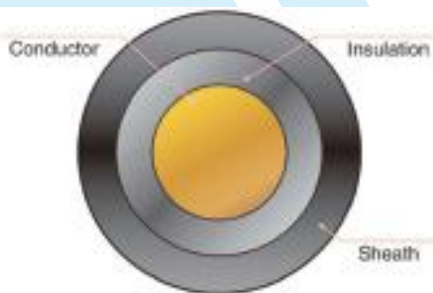
*Note:We could manufacture the control core,coaclal,fiber optic and networkcable, and the number of units design acording to customer requirements

PV Cable

Photovoltaic Cable

Photovoltaic Cable PV1-F Series

● Construction



● Characteriseics

This is a watermark for the trial version, register to get the full one!

Benefits for registered users:

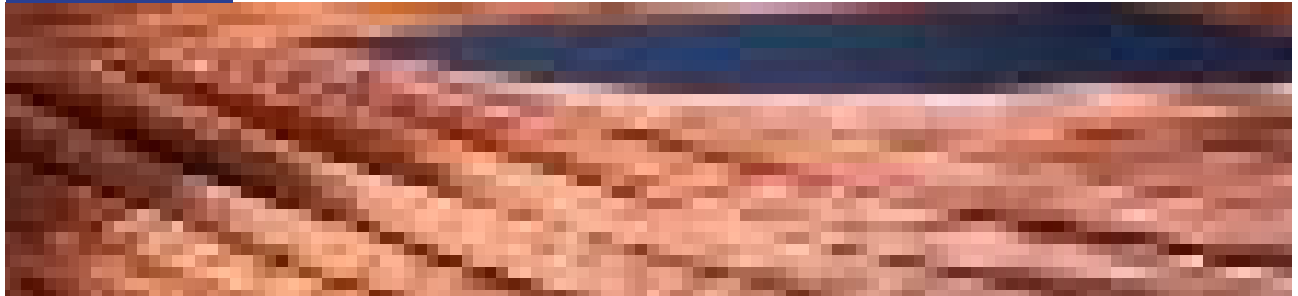
- 1.No watermark on the output documents.
- 2.Can operate scanned PDF files via OCR.
- 3.No page quantity limitations for converted PDF files.

Remove Watermark Now

Oil Resistance	Chemical Resistance	Ozon Resistance
Temperature:	-40℃~+90℃	
Certificate:	RoHS ,TUV(Rheinland),CE; 2Pf G1169/08.07	
Conductor:	Tinned annealed copper	
Insulation:	XLPE	
Sheath:	Flame-retardant XLPE	
Rated voltage:	AC 0.6/1kV; DC 1.8kV	
Voltage withstand test:	AC6.5kV/min	
Insulation resistance:	15MΩ·km(20℃)	

*Note:This product instlationm sheath color are black, also we can have other colors from customers" requirements. Above are the standard products also we can design on customer requirement.

Cable Material Wire



This is a watermark for the trial version, register to get the full one!

Benefits for registered users:

- 1.No watermark on the output documents.
- 2.Can operate scanned PDF files via OCR.
- 3.No page quantity limitations for converted PDF files.

Remove Watermark Now



Cable Material Wire

Copper wire & Tin plated copper wire



图 8 CCA(copper clad aluminum)

This is a watermark for the trial version, register to get the full one!

Benefits for registered users:

- 1.No watermark on the output documents.
- 2.Can operate scanned PDF files via OCR.
- 3.No page quantity limitations for converted PDF files.

Remove Watermark Now



图 7 Tin plated Copper Wire

Cable Material Wire

CCA & CCS

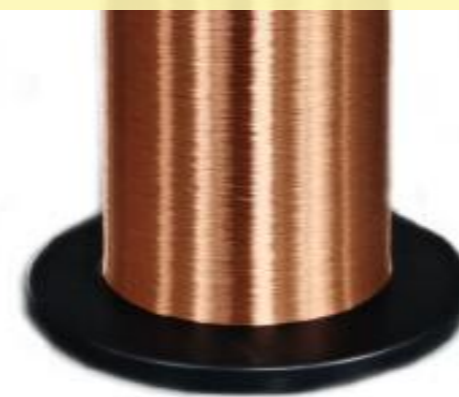


图 10 Enamelled CCA wire



图 11 Enamelled copper wire